

eFollower[®]

H101 PPT Presenter

User's Guide

Support Windowsxp and MacOS 10.10 & above versions

H101 Features

This guide describes how to use the eFollower PPT presenter H101 and run the operating software. Be sure that you read this guide and understand its contents before using it.

1. It is a wireless presenter with a display digitron and vibrating motor, plus the somatic mouse function.
2. This H101 product replaces the laser transmitter that might hurt user's eyes, By using the following three digital scene modes, H101 operation is more convenient and powerful. However, you need to run the computer-aided software prior to using it.

Spotlight Mode



Magnifier Mode



Digi-Laser Mode



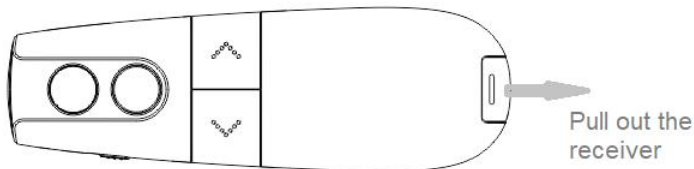
3. You can set up the alarm timer before meeting. When the meeting is over, the presenter will alert you by vibrating. You can check the remaining time during the meeting (remaining time can be displayed by the presenter).

4. The receiver anti-lost function can assist you not to remember unplugging the USB receiver after meeting is finished.

I. H101 Operation Steps

Step 1: Pull-out Receiver From Presenter

There is a build-in receiver on the back of presenter H101. Please pull it out before using.



Step 2: Insert The Receiver Into The USB Port Of The Computer

Only one side of the receiver can be inserted into the USB port of the computer.

Step 3: The Receiver Establish Connection With The Computer

After the receiver is inserted into the USB port, it needs to establish a connection with the computer. **This step can be completed within seconds generally. However for the following two cases, we need to wait a few more seconds or minutes.**

3.1 If the **computer is inserted for the first time by the receiver**, the computer will spend several minutes to establish a connection with the receiver. The actual time depends on how fast the computer processes it (If you have to wait for over 10 minutes, and the prompt message does not disappear, please pull it out and insert it again for retry).

3.2 For earlier Windows operating systems, after **unplugging the receiver and immediately reinserting it again**, you'd have to wait several seconds.

A simple way to check the completion of this step is to turn on the presenter and press and hold the key③. When the mouse pointer can move with your wrist indicates that it is working correctly.

Step 4: Locate The Computer Aided Software

H101 have many more powerful functions. However, you need to run the computer-aided software first. So where is the software? This step is to guide you how to locate the H101 software.

Software download URLs are listed in the instructions and yellow strips that are stored in package.

<http://www.yxssm.com/a/English>

Step 5: Install The Computer-Aided Software


5.1 Install The Software On Windows System

Considering many users often change their speech computers. We made the Windows version software as green software, i.e., it need not be pre-installed before using. You can double-click the application icon (.exe file) to run it. Or you can copy it into computer first.

5.2 Install The Software On MacOS System

The software package (eFollowerPresenter.dmg) of MacOS version needs to be installed prior to using.

A) After double-clicking eFollowerPresenterH101.dmg, the system will release a disk image

file(eFollowerPresenter ) to the desktop of MacOS computer.



B) Double click  to open the installation window as below.



C) Drag the icon  into Applications folder to install the software.

D) Check : Open "launchpad" , There is a application icon like  means installation is successful.

E) After installation is completed, you can delete the dmg file and eject "eFollowerPresenterH01"file.

Now the software installation is complete. we need to run the installed software prior to using.

Step 6: Run The Computer Aided Software

6.1 Run Software On Windows System

Double click to run the executable file(eFollowerPresenterH101.exe or eFollowerPresenterH101_xp.exe) of corresponding version.

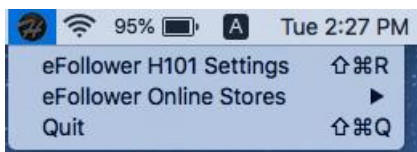
6.1.1 Where Is The Software After Starting

After the program is running, the welcome window appears for 2 seconds , and then disappear. Actually, the program did not stop. It's still running in the background. Its icon is loaded in the tray of the lower right corner of the desktop.



6.1.2 Software Setting and Quitting

Click the icon by the right mouse button to open the popup menu. You can choose to open the settings window or quit the software. Click the icon by the left mouse button to open the settings window directly.




6.2 Run Software On MacOS System

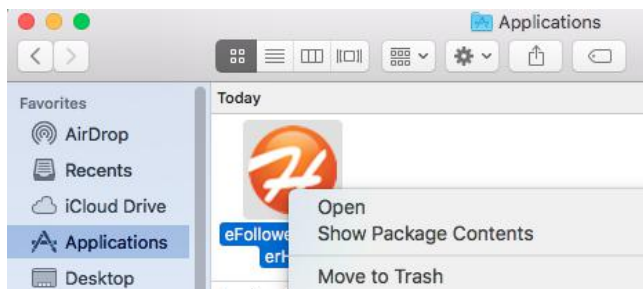
There are two ways to work with MacOS version software for the first running of the H101 software.

6.2.1 Pop-up Window “Open an app from an unidentified developer” Appears

When the “.dmg” file is downloaded by Safari, the following pop-up window will appear for the first time. This is a normal phenomenon. MacOS pop-up window appears while user run the program that is not downloaded from Apple store. This pop-up windows will not appear again after the following steps.



- A) Click “Finder” , → “Applications”. And find the icon of eFollowerPresenterH101.
- B) Press and hold the key “control”, and Click the icon “eFollowerPresenterH101”. Select “open” menu after the prompt window is popped up.



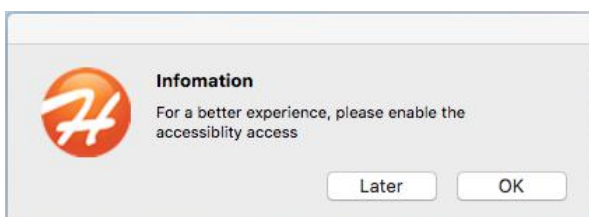
- C) Click the “Open” button.



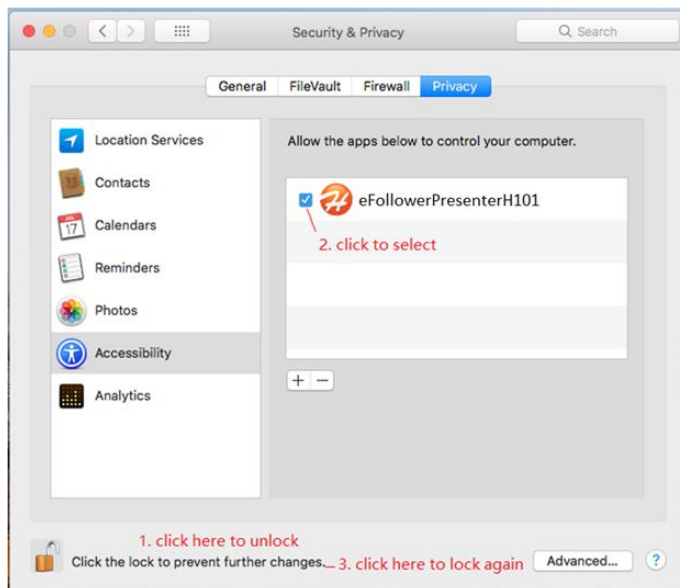
6.2.2 Pop-up Window “enable accessibility access” Appears

This step is the requirement of PresenterH101. It is only the first time usage that this MacOS pop-up window “enable accessibility access” appears. If it is for set up, this pop-up window will not appears again.

After clicking the "eFollowerPresenterH101" icon in the "Launchpad", the following MacOS pop-up window appears.



- 1) Click "Later" that runs the software for this time. However, this pop-up window will appear for every run.
- 2) Click "OK" and the following pop-up window appears



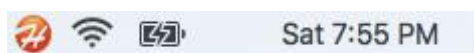
- 1) Click the bottom part to unlock (need to enter the login password).
- 2) Select the check box before eFollowerPresenterH101 icon.
- 3) Click the bottom part to lock the setting again.
- 4) **Re-run the program** ("launchpad"-->"eFollowerPresenterH101")

6.2.3 Where Is The Software After Starting


After the program is running, the welcome window appears for 2 seconds , and then disappears. Actually, the program did not stop. It's still running in the background. Unlike the Windows version, the icon of MacOS software is placed in the tray of the upper right corner of the desktop.


6.2.4 Software Setting and Quitting


Click the icon to choose to open the settings windows or to quit the software.




6.3 The Common Features for Window and MacOS

- A) After the program is run, if it works correctly, the icon is .

If the presenter is not turned on or the receiver has not been inserted into USB port, the icon is .

B) When the icon is , clicking the icon will prompt you to insert the receiver or turn on the presenter.

When the icon is , click it to enter the setup window.

Step 7: Turn On The Presenter

Turn on the switch on the left side of the presenter.

A) The remaining time of the alarm timer is displayed under the presenter. “0” is displayed means alarm timer is not set.

B) If the presenter is work correctly, the presenter vibrates and the icon of program changes from black to orange.


Step 8: Check Performance of H101 presenter

After preparatory works have been completed, check to see the performance of the presenter H101.

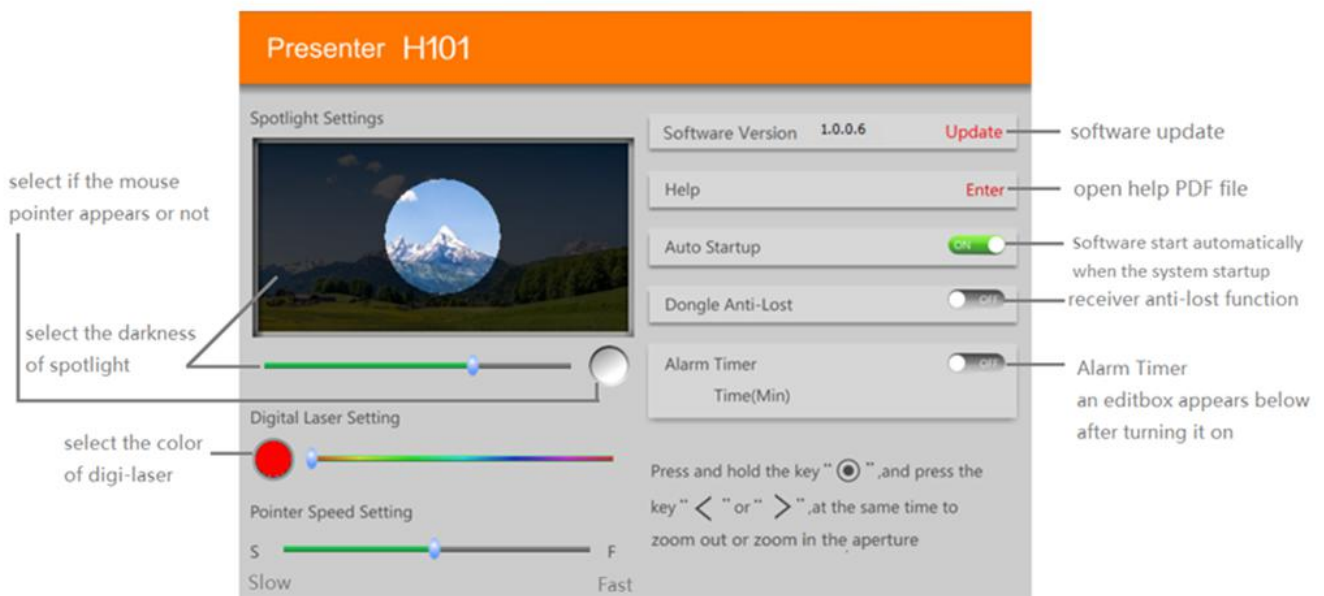
Press and hold the key③, then turn your wrist. What do you see? Does the screen of the computer have turned black, Just a white circle moving along with your wrist? How wonderful.

This is one of the many functions of Presenter H101. Now, let's introduce you all funtions of Presenter H101.

II. H101 Software Functions

When working, click the icon  of task bar to open the settings window.

1. Overviews:



2. Scene Settings

Spotlight Mode: The background brightness can be adjusted by H101 software. And whether the mouse pointer icon is displayed or not is selectable.

Digi-Laser Mode: The color of the digital laser can be adjusted.

Aperture size is adjusted on the presenter for ease of use (see [combination key](#) chapter). The software will save the aperture dimensions data for different scenes.

3. Pointer Speed Setting

Drag the scroll bar to adjust the speed of the mouse pointer ("S" means slow. "F" means fast)

4. Auto-Startup:

The software starts automatically when the operating system startup.

5. Anti-lost

After the wireless is disconnected for 20 seconds (the presenter is off), the computer will play a sound to prompt you to remove the receiver if the receiver is still plugged. (default: function closed)

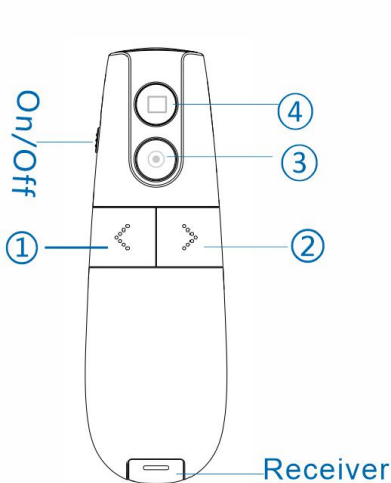
6. Alarm timer

Set the alarm timer (maximum: 199 minutes) in spotlight setting window.

When meeting timer is up, the H101 presenter will vibrate to alert you. You can click the side key④ of H101 presenter any time to view the remaining time of alarm timer.

III. H101 Presenter Functions

1. H101 Key Descriptions



- ① Click: previous page
Long-press: black screen
- ② Click: next page
Long-press: PPT play/esc
- ③ Click: hyperlinks(mouse left)
Long-press: access to scene
Double-click:scene switching
- ④ Click: display the remaining time(3 sec)
Long-press:
 - Tilt to the left: task backward switching
 - Tilt to the right: task forward switching
 - Head-up: volume up
 - Head-down: volume down

Digitron Display:

Number: remaining time
LO : low power
AP : wireless re-pair
CA : sensor calibration

***Long press key④ to turn on the laser in the version with laser transmitter.**

Click: press the left mouse button and lift it immediately

Long-press: press and hold for at least a second.

2. Combination Keys

2.1 Reduce The Aperture

Press and hold key③ for one second and then press the key① simultaneously to reduce the aperture.

2.2 Increase The Aperture

Press and hold key③ for one second and then press the key② simultaneously to increase the aperture.

3. Other Functions

3.1 After Startup

Open the H101 presenter to show the remaining time of alarm timer. If the timer is not set, "0" will be displayed. When displaying "LO" and flashing for three seconds it means the voltage of the battery is low. Battery needs to be replaced.

A vibration of motor means wireless is connected with receiver after turn-on. If no motor vibration, please check whether the receiver is properly plugged into the USB port of the computer.

3.2 Wireless Repair

If H101 presenter cannot connect to receiver (receiver is plugged, but the presenter doesn't work), you can try to repair it with the receiver in the follow steps:

- 1) Press and hold the key① + key②, and then turn on the presenter. If "RP" is displayed means the presenter is in repair mode.
- 2) Plugging in USB receiver and then turn on the H101 presenter, press and hold the key③ and move it close to the receiver (in 20cm). The repair is successful if the spotlight scene mode can be entered.

III. H101 Special Cases

1. Nothing Happened After Turning On H101

If the H101 presenter shows nothing after turning on, check if the battery is low. If it is something else, you need to look up the reason as listed in section III. [H101 key descriptions](#).

2. H101 Is Not Working Properly

A) Please make sure the battery is not low and the receiver is correctly inserted into USB port (check the orientation of receiver insertion)

B) Make sure the software is running. In fact, even if the software is not running, the mouse pointer can move around with your wrist when press and hold the key③.

You need to repair H101 presenter with the receiver. (see section III 3.4 “[Wireless repair](#)”)

3. Mouse Pointer Drifts In Scene Mode

The gyro sensor needs to be recalibrated when the mouse pointer movement appears to be drifting. The operation steps are as following :

- 1.) Press and hold key③ + key④ and turn on the H101 presenter, “**CR**” sign is displayed that indicates it is in the calibration status.
- 2.) Put the H101 presenter on the desk **statically** until the “**CR**” sign disappears. It shows the calibration is successful.

Note: **During gyro sensor recalibration, H101 presenter cannot be placed on a shaking or slightly vibrating table.**

Technical Support: support@haojiehua.com